

PROFILE INFORMATION

2016-17



Olathe Public Schools
USD #233



School Finance
Kansas State Department of Education
Landon State Office Building
900 SW Jackson Street, Suite 356
Topeka, Kansas 66612-1212

www.ksde.org

Order of Contents

- Budget General Information (characteristics of district)
- Supplemental Information for Tables in *Summary of Expenditures*
- KSDE Website Information Available
- Summary of Expenditures (Sumexpen.xlsx)

2016-17 Budget General Information

USD #: 233

Introduction

The Board of Education extends a welcome to all who wish to comment on the published 2016-17 budgets for Unified School District # 233 (Olathe Public Schools). Individuals who wish to address the Board of Education will be asked to state their name and address as a matter of public record. Also, individuals addressing the Board of Education will be asked to respect the opportunity for all who wish to be heard by limiting their remarks to a reasonable time. Over the past six months various budget presentations have been provided by the superintendent and staff. These presentations provided background information for the Board and public directly related to the budgets presented for consideration at this time.

The following document aligns with the Olathe Public School's *Annual Budget Document* for the fiscal year 2016-17. The development, review, and consideration of all State Budgeted Funds were completed with a detailed review of revenue and expenditure items within the context of the District's mission, goals, and financial commitments.

It is the District's responsibility to publish and disseminate budget information to the Board of Education and local community. We welcome the opportunity to present and discuss operational plans and related financial impact with all interested parties. Interaction among interested groups consistently leads to operational and educational improvements; which translates to increased opportunities for the students of Olathe Public Schools.

Board Members

Rick Schier (President)	12459 Rosehill Street Overland Park, KS 66213	rickschier@everestkc.net	(913) 530-3644
Brent McCune (Vice President)	10890 S. Hastings St. Olathe, KS 66061	bamccu@gmail.com	(913) 238-8000
Joe Beveridge	10023 Sunset Dr. Lenexa, KS 66220	joebev@gmail.com	(913) 461-9906
LeEtta Felter	14220 S. Copper Creek Dr. Olathe, KS 66062	LeFelter@yahoo.com	(913) 486-7809
Amy Martin	12455 Rosehill Street Overland Park, KS 66213	amymartinathome@me.com	(913) 302-1443
Mike Poland	301 S. Stevenson Olathe KS 66061	mjpoland@johnsonpoland.com	(913) 269-5503
Shannon Wickliffe	18923 W. 116 th Street Olathe, KS 66062	shannon1wickliffe@gmail.com	(913) 269-4102

Key Staff

Superintendent:
Associate or Assistant Superintendents:

Dr. Pat All - Interim
Dr. Alison Banikowski – Deputy Superintendent
Dr. Erin Dugan – Assistant Superintendent
Dr. Jessica Dain – Assistant Superintendent/Teaching & Learning

Business Office Staff:

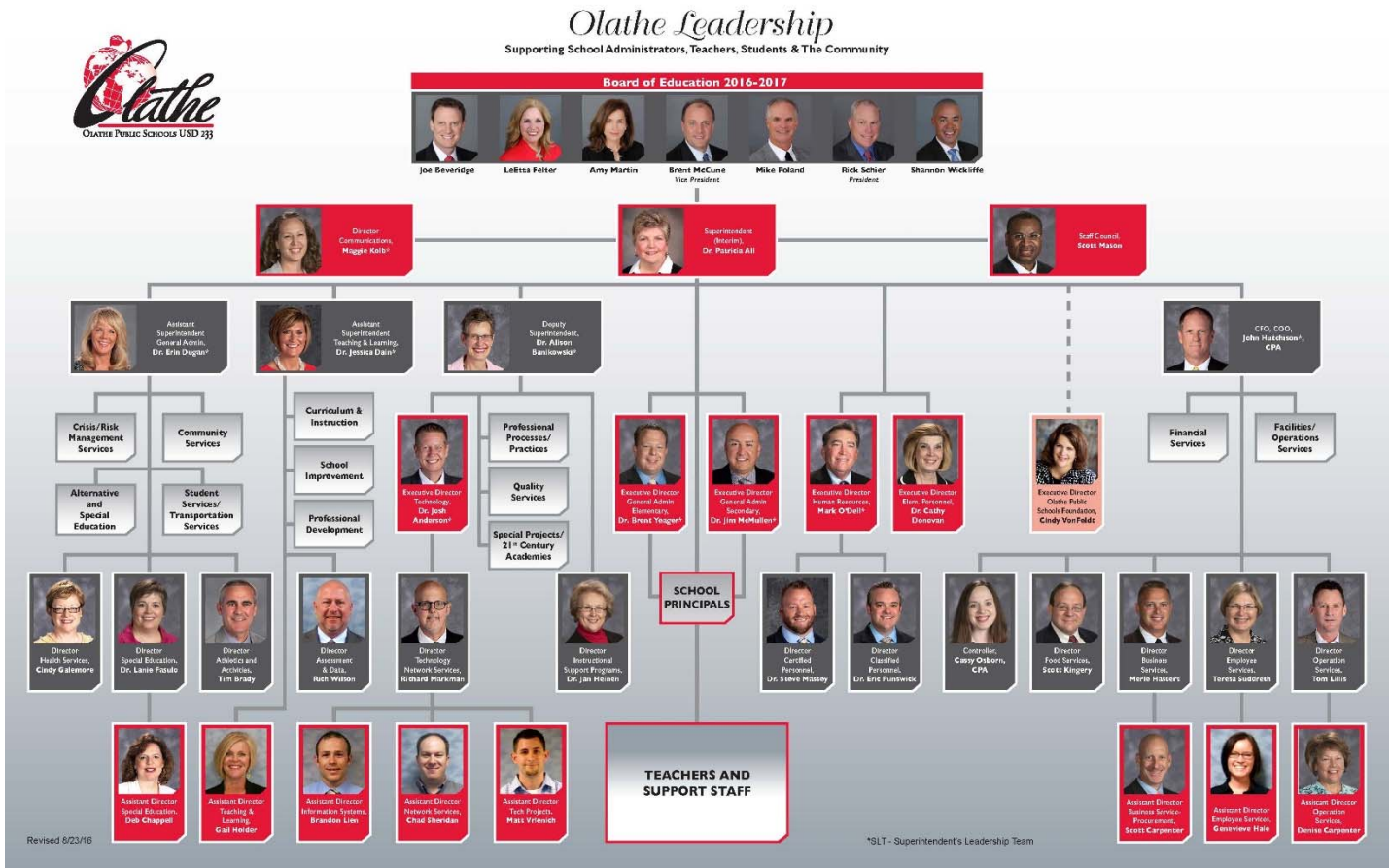
John Hutchison, CPA - Chief Financial & Operations Officer
Cassy Osborn, CPA - Controller

Curriculum & Instruction Staff:

Dr. Jessica Dain – Assistant Superintendent/Teaching & Learning

Other Key Contacts:

Dr. Jim McMullen – Executive Director of General Administration/ Secondary
Brent Yeager – Executive Director of General Administration/ Elementary Programs



The District's Accomplishments and Challenges

Accomplishments:

Olathe Public Schools are known for innovative programs, excellent teaching, well-maintained schools and classrooms rich in technology. A reputation for excellence has made this fast-growing district the second-largest in the state, with an enrollment of nearly 30,000 students.

Community support and parent involvement are strong. In both voter and parent surveys, the district is given high marks for “provides good value” for the community’s investment of tax dollars. Voters approved a \$156 million bond election in June 2016. These funds will be utilized to make much needed facility, safety, and technology upgrades as well as construction of additional instructional space to keep up with student growth including a tenth middle school.

We are proud to report that Olathe district students, staff, and the district itself are earning recognition on the local, state and national stage. Recent achievements include:

- 22 students were named National Merit Finalists in 2016.
- Olathe Northwest 2016 graduate Nicolas Rodriguez was named a 2016 Presidential Scholar, one of the most prestigious honors bestowed upon a graduating senior.
- 2016 America's Most Challenging High Schools ranking by the Washington Post — In Kansas, No. 10 is Olathe Northwest High School, No. 12 is Olathe North High School.
- The 2016 Whelan Kansas Leadership for Learning Award from the Center for Research on Learning and the Department of Special Education at the University of Kansas was awarded to the district’s Special Services Department.
- The Governor's Achievement Award was given to four schools in the district: Bentwood Elementary School, Manchester Park Elementary School, Olathe Northwest High School and Regency Place Elementary School

Student SAT and ACT scores consistently exceed both state and national averages. The district had 8 students receive a perfect ACT score in 2015-16.

The Olathe district’s vision is “Students Prepared for *their* future.” To meet the challenge of preparing students for the competitive, high-tech, global marketplace of the 21st century, the district offers innovative 21st Century High School Programs in Aerospace and Engineering, Animal Sciences, Life Sciences, e-Communication, Geosciences, Sports Medicine & Athletic Training, Business/Entrepreneurship and more. These programs provide rigor, relevance and relationships with business and career professionals, credit offerings from the University of Kansas, and opportunities for transcript endorsements.

Challenges:

Like all school districts in Kansas and throughout the nation, Olathe Public Schools is facing greater demands and tighter resources. Our goal is to ensure that frozen funding has limited impact on the quality of education we provide to our students. The district is also facing enrollment increases and the future need for additional facilities to accommodate this growth.

Supplemental Information for the Following Tables

1. Summary of Total Expenditures by Function (All Funds)
2. Summary of General Fund Expenditures by Function
3. Summary of Supplemental General Fund Expenditures by Function
4. Summary of General and Supplemental General Fund Expenditures by Function
5. Summary of Special Education Fund by Function
6. Instruction Expenditures (1000)
7. Student Support Expenditures (2100)
8. Instructional Support Expenditures (2200)
9. General Administration Expenditures (2300)
10. School Administration Expenditures (2400)
11. Central Services Expenditures (2500)
12. Operations and Maintenance Expenditures (2600)
13. Transportation Expenditures (2700)
14. Other Support Services Expenditures (2900)
15. Food Service Expenditures (3100)
16. Community Services Operations (3300)
17. Capital Improvements (4000)
18. Debt Services (5100)
19. Miscellaneous Information – Transfers (5200)
20. Miscellaneous Information Unencumbered Cash Balance by Fund
21. Reserve Funds Unencumbered Cash Balance
22. Other Information – Enrollment Information
23. Miscellaneous Information Mill Rates by Fund
24. Other Information – Assessed Valuation and Bonded Indebtedness

Note: The FTE (full time equivalency) used in this report to calculate the “Amount Per Pupil” is defined as follows: Enrollment (FTE) includes the current year enrollment on September 20, February 20, 4 yr. old at-risk, and virtual. It does not include non-funded preschool or full-day kindergarten not on an IEP.

KSDE Website Information Available

K-12 Statistics (Building, District or State Totals) website below:

<http://svapp15586.ksde.org/k12/k12.aspx>

- Attendance / Enrollment Reports
- Staff Reports
- Graduates / Dropouts Reports
- Crime / Violence Reports

School Finance Reports and Publications website below:

<http://www.ksde.org/Agency/Fiscal-and-Administrative-Services/School-Finance/Reports-and-Publications>

- Assessed Valuation
- Cash Balances
- Headcount Enrollment
- Mill Levies
- Personnel (Certified/Non-Certified)
- Salary Reports

Kansas Building Report Card website below:

<http://ksreportcard.ksde.org/>

- Attendance Rate
- Graduation Rate
- Dropout Rate
- School Violence
- Assessments
 - Reading
 - Mathematics
 - Writing
- Graduates Passing Adv. Science Courses
- Graduates Passing Adv. Math Courses