

2018-19 Budget Profile



Olathe Public Schools USD #233



School Finance
Kansas State Department of Education
Landon State Office Building
900 SW Jackson Street, Suite 356
Topeka, Kansas 66612-1212

www.ksde.org

Order of Contents

- Budget General Information (characteristics of district)
- Supplemental Information for Tables in *Summary of Expenditures*
- KSDE Website Information Available
- Summary of Expenditures (Sumexpen.xlsx)

2018-19 Budget General Information

USD #: 233

Introduction

The Board of Education extends a welcome to all who wish to comment on the published 2018-19 budgets for Unified School District # 233 (Olathe Public Schools). Individuals who wish to address the Board of Education will be asked to state their name and address as a matter of public record. Also, individuals addressing the Board of Education will be asked to respect the opportunity for all who wish to be heard by limiting their remarks to a reasonable time. Over the past six months various budget presentations have been provided by the superintendent and staff. These presentations provided background information for the Board and public directly related to the budgets presented for consideration at this time.

The following document aligns with the Olathe Public School's *Annual Budget Document* for the fiscal year 2018-19. The development, review, and consideration of all State Budgeted Funds were completed with a detailed review of revenue and expenditure items within the context of the District's mission, goals, and financial commitments.

It is the District's responsibility to publish and disseminate budget information to the Board of Education and local community. We welcome the opportunity to present and discuss operational plans and related financial impact with all interested parties. Interaction among interested groups consistently leads to operational and educational improvements; which translates to increased opportunities for the students of Olathe Public Schools.

Board Members

Shannon Wickliffe (President)	18923 W. 166 th Street Olathe, KS 66062	shannon1wickliffe@gmail.com	(913) 269-4102
Joe Beveridge (Vice-President)	10023 Sunset Dr. Lenexa, KS 66220	joebev@gmail.com	(913) 461-9906
LeEtta Felter	14220 S. Copper Creek Dr. Olathe, KS 66062	LeFelter@yahoo.com	(913) 486-7809
Brian Geary	12061 S. Troost Olathe, KS 66061	gearybrian1972@gmail.com	(913) 526-4536
Amy Martin	12455 Rosehill Street Overland Park, KS 66213	amymartinathome@me.com	(913) 302-1443
Brent McCune	10890 S. Hastings St. Olathe, KS 66061	bamccu@gmail.com	(913) 238-8000
Rick Schier	12459 Rosehill Street Overland Park, KS 66213	rickschierboe@gmail.com	(913) 530-3644

Key Staff

Superintendent:

John Allison

Associate or Assistant Superintendents:

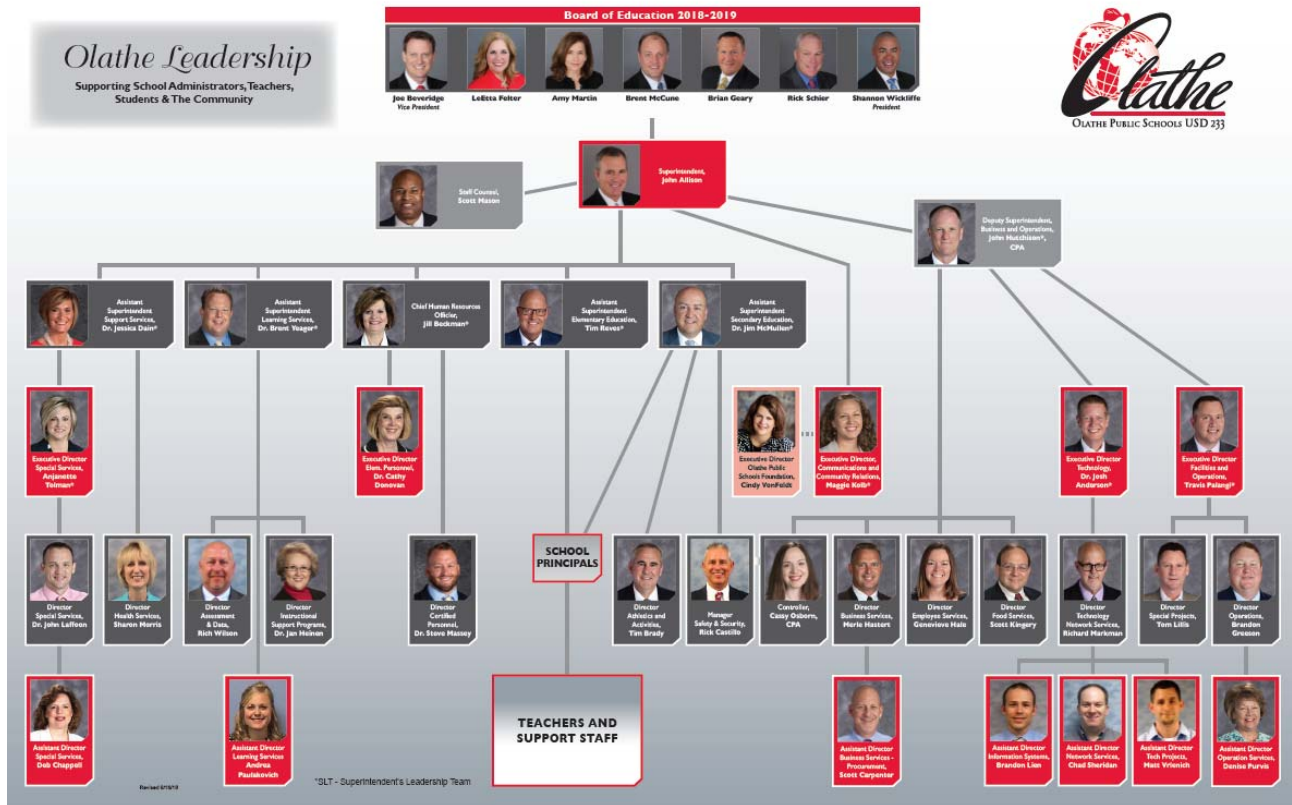
John Hutchison Deputy Superintendent
 Business and Operations
 Dr. Jessica Dain Assistant Superintendent
 Student Support Services
 Dr. Jim McMullen Assistant Superintendent
 Secondary Education
 Dr. Brent Yeager Assistant Superintendent
 Learning Services
 Tim Reves Assistant Superintendent
 Elementary Education

Business Office Staff:

John Hutchison, CPA Deputy Superintendent
 Business and Operations
 Controller
 Cassy Osborn, CPA

Curriculum & Instruction Staff:

Dr. Brent Yeager Assistant Superintendent
 Learning Services



The District's Accomplishments and Challenges

Accomplishments:

Olathe Public Schools are known for innovative programs, excellence in teaching, technology rich classrooms and well maintained buildings and grounds. With a strong reputation for educational excellence, community and parent support and involvement is strong.

- Students in the Olathe School District scored a composite score of 23.8 on the ACT exam, which is the third highest in the district's history.
- The Association of School Business Officials International (ASBO) recognized the Olathe School District for excellence in budget presentation with the Meritorious Budget Award (MBA) for the 2017-18 budget year.
- Olathe Public Schools had 19 students named National Merit Scholarship finalists.
- The Read 180 program in Olathe Public Schools now ranks in the top 10 percent in the United States according to recent data and growth provided by Houghton Mifflin Harcourt (HMH) representatives.
- Ravenwood Elementary has earned two Promising Practice Awards from the Kansas State Department of Education in partnership with character.com.
- Two Olathe elementary schools have received honors from the Kansas State Department of Education (KSDE). Fairview Elementary received the KSDE Challenge Award in third-grade reading and math. Central Elementary received the KSDE Challenge Award for Academic Achievement in fourth-grade math.
- Regency Place Elementary received a \$5,000 Science, Technology, Engineering and Math (STEM) grant from Century Link.
- Custodians at Olathe South High School, Indian Trail Middle School and Madison Place Elementary received building assessment awards through SupplyWorks.
- Two Olathe high schools were named to the top-15 in the U.S. News and World Report's list of Best Kansas High Schools. Olathe Northwest High School was ranked eighth and Olathe North High School was ranked 14.
- Seven Olathe students received a perfect score of 36 on the ACT exam.
- The Olathe Northwest High School Scholars Bowl team earned the Kansas 6A state championship.
- The Olathe North High School Mock Trial team was named the 2018 Kansas state champion and has earned the right to compete at the National Mock Trial Championship.
- Austin Shively, Olathe Northwest High School senior, earned the 2018 Kansas state title in both Dramatic Interpretation and Humorous Interpretation.
- Olathe Public Schools had 24 students to receive the Seal of Biliteracy based on their academic achievement in English and an additional foreign language.
- Two Olathe students were selected received community awards from the Olathe Human Relations Commission. Olathe North student Amanda Yoksh and Olathe Northwest student Daytona Hodson received the Youth Community Award.
- Olathe East High School placed third in the Burns & McDonnell Battle of the Brains competition. As winners of the Spartan Award, Olathe East received \$20,000 in grants.
- Evan Kappelman, Olathe East High School junior saxophone player, was selected to the Bands of America National Jazz Band.

- California Trail Middle School earned top honors at the 2018 Science Olympiad Regional Tournament.
- Georgia Mitchell, Olathe North High School senior, was named American Academic Competition Institute's (AACI) Student Trainer of the Year.
- Alexandria Stephenson, Olathe North High School senior, received one of three Grand Awards which were presented to the top three senior projects that meet the stringent requirements for entering the INTEL International Science and Engineering Fair.
- Olathe North High School junior Reem Atallah earned first place in Human Resources Management Series in the Distributive Education Clubs of America (DECA) International Career Development Conference.
- Olathe North High School chemistry teacher Amy Clement was awarded the 2017 Outstanding High School Chemistry Teacher in the Midwest region as selected by the American Chemical Society.
- The National Science Teachers Association (NSTA) and the National Council of Teachers of Mathematics (NCTM) selected Bruce Wellman, chemistry and engineering teacher at Olathe Northwest High School, as one of 10 math and science teachers to serve as a 2017 STEM Teacher Ambassador.
- The Kansas School Superintendents' Association (KSSA) has selected Olathe Superintendent John Allison as the 2018 Kansas Superintendent of the Year.
- Andrew Heinicke, Olathe Public Schools special services coordinator, was named Emporia State University's 2017 Outstanding Recent Graduate from the School of Education.
- Chisholm Trail Middle School seventh-grade science teacher Melissa Kinzer was named one of the state's Kansas Horizon Award winners.

Challenges:

Taking care of the needs of our homeless/transient students in assisting with housing, health care, food, clothing, school supplies is a critical concern every day. Economics plays a big role in placing limitations on the growth of facilities as well as compensation and benefits for employees. Rising health care costs and lack of funding to provide competitive compensation increases is always a concern.

Supplemental Information for the Following Tables

1. Summary of Total Expenditures by Function (All Funds)
2. Summary of General Fund Expenditures by Function
3. Summary of Supplemental General Fund Expenditures by Function
4. Summary of General and Supplemental General Fund Expenditures by Function
5. Summary of Special Education Fund by Function
6. Instruction Expenditures (1000)
7. Student Support Expenditures (2100)
8. Instructional Support Expenditures (2200)
9. General Administration Expenditures (2300)
10. School Administration Expenditures (2400)
11. Central Services Expenditures (2500)
12. Operations and Maintenance Expenditures (2600)
13. Transportation Expenditures (2700)
14. Other Support Services Expenditures (2900)
15. Food Service Expenditures (3100)
16. Community Services Operations (3300)
17. Capital Improvements (4000)
18. Debt Services (5100)
19. Miscellaneous Information – Transfers (5200)
20. Miscellaneous Information Unencumbered Cash Balance by Fund
21. Reserve Funds Unencumbered Cash Balance
22. Other Information – Enrollment Information
23. Miscellaneous Information Mill Rates by Fund
24. Other Information – Assessed Valuation and Bonded Indebtedness

Note: FTE is the audited enrollment 9/20 and 2/20 (if applicable) and estimated for the budget year, which includes 4yr old at-risk and virtual enrollment. Enrollment does not include non-funded preschool. Beginning 2017-18, full-day Kindergarten is 1.0 FTE. This information is used for calculating Amount Per Pupil for Sumexpen.xlsx and Budget At A Glance (BAG).

KSDE Website Information Available

K-12 Statistics (Building, District or State Totals) website below:

<http://svapp15586.ksde.org/k12/k12.aspx>

- Attendance / Enrollment Reports
- Staff Reports
- Graduates / Dropouts Reports
- Crime / Violence Reports

School Finance Reports and Publications website below:

<http://www.ksde.org/Agency/Fiscal-and-Administrative-Services/School-Finance/Reports-and-Publications>

- Assessed Valuation
- Cash Balances
- Headcount Enrollment
- Mill Levies
- Personnel (Certified/Non-Certified)
- Salary Reports

Kansas Building Report Card website below:

<http://ksreportcard.ksde.org/>

- Attendance Rate
- Graduation Rate
- Dropout Rate
- School Violence
- Assessments
 - Reading
 - Mathematics
 - Writing
- Graduates Passing Adv. Science Courses
- Graduates Passing Adv. Math Courses